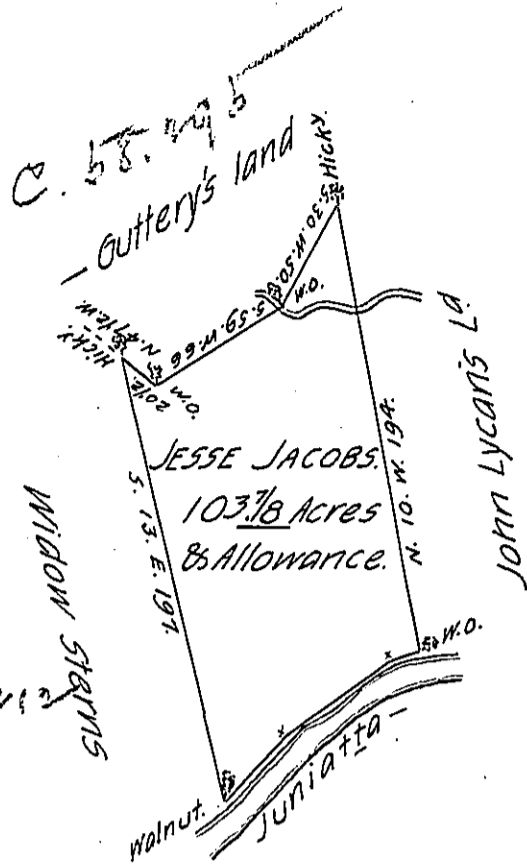


Courses & Distances.

- N. 44. E. 40.
- N. 55 E. 56.
- N. 74. E. 13
- N. 10 W. 194
- S. 30 W. 50
- S. 59 W. 66
- N. 47 1/2 W. 20 1/2
- S. 13. E. 197.

C. Vol. 205. 212



The Draught of a tract of land Situate in Fermanaugh township, Cum-berland County. Containing one hundred & three Acres & eight tenths & the Usual allowance of six per Cent. for Roads &c. Surveyed for Jesse Jacobs Dec^r. the 29th 1784. In Pursuance of an Application Dated at Philad^a August the 1st 1766, N^o 600.

J^r. Jas^s Harris, D. S.

John Lukens, Esq^r.
 Surveyor General.

IN TESTIMONY that the above is a copy of the original remaining on file in the Department of Internal Affairs of Pennsylvania, made conformably to an Act of Assembly approved the 16th day of February, 1833, I have hereunto set my Hand and caused the Seal of said Department to be affixed at Harrisburg, this seventeenth day of April 1906.

Isaac N. Brown
 Secretary of Internal Affairs.